



*March 27, 2023*



*Washington, D.C.*

# MULTI-STATE DATA COLLABORATIVES

*Analytics for Public Impact*

# Midwest Data Collaborative



**George Putnam, Chair**  
*Illinois Department of  
Employment Security*



**Anna Hui**  
*Missouri Department  
of Labor & Industrial  
Relations*



**Coretta Pettway**  
*Ohio Department of  
Job & Family Services*

# Southern Regional Data Collaborative



**Adam Leonard,**  
**Chair**  
*Texas Workforce  
Commission*



**Deniece Thomas**  
*Tennessee  
Department of Labor  
& Workforce  
Development*



**Robert McGough**  
*Arkansas  
Department of  
Information Systems*



**Matt Berry**  
*Kentucky Center  
for Statistics*



**Richard Rhoda,**  
**Ex-Officio**  
*East Tennessee  
State University*

# Eastern States Longitudinal Data Collaborative



**Dana Brandt, Chair**  
*DataSpark, University of  
Rhode Island Library  
Systems*



**Tod Massa**  
*State Council of  
Higher Education for  
Virginia*



**Lesley Hirsch**  
*New Jersey Department  
of Labor & Workforce  
Development*

# SOME KEY DIFFERENTIATORS

1. Moving from shared projects to data products to **practice**
2. Using a **network of agencies, states, collaboratives** to share ideas, practices, models, research frameworks, and products to speed learning and innovation and move products to scale
3. Increasing data access to see more clearly into **labor markets that cross state lines** and include the outcomes of **workers and learners who cross state boundaries**
4. Creating shared data products with **timely and locally relevant information**

# *PATHWAYS TO INNOVATION*

**To develop goals and action steps for the next 18 months or beyond that will lead to a pipeline of innovative data projects and products that will inform policy and practice at the local level.**

# TODAY'S AGENDA

---

1:50 PM | **State Agency Voices: The Value of the Network**

---

2:20 PM | **Progress Updates: The Service Organizations**

---

2:30 PM | **Pathways to Data Product Innovation**

---

3:00 PM | **Call to Action**

---

3:20 PM | **Individual Collaborative Meetings**

---

4:30 PM | **Results from Individual Collaborative Meetings**

---

5:30 PM | ***Optional Networking Event***

# Leaders in the Multi-State Data Collaboratives Ecosystem



**Ahu Yildirmaz**  
*Coleridge Initiative*



**Jeremy Kelley**  
*Bill & Melinda Gates  
Foundation*



**Scott Sanders**  
*National Association  
of State Workforce  
Agencies*



**Carrie Klein**  
*State Higher  
Education Executive  
Officers' Association*



# TABLE TOP INTRODUCTIONS

- What is your state, agency, and sector?
- How many years of policy, program, and/or data experience are represented at your table?



# State Agency Voices: The Value of the Network



*Facilitator*

**Jessica  
Cunningham**  
*Coleridge Initiative*



**Anna Hui**  
*Missouri Department  
of Labor & Industrial  
Relations*



**Lesley Hirsch**  
*New Jersey  
Department of Labor  
& Workforce  
Development*



**Jake Walker**  
*Arkansas  
Department of  
Information Systems*

# Progress Updates: The Service Organizations



**Yvette Chocolaad**  
*National Association of  
State Workforce Agencies*



**Jessica Cunningham**  
*Coleridge Initiative*

# Coleridge Initiative's 3rd Annual National Convening

# 3rd Annual National Convening

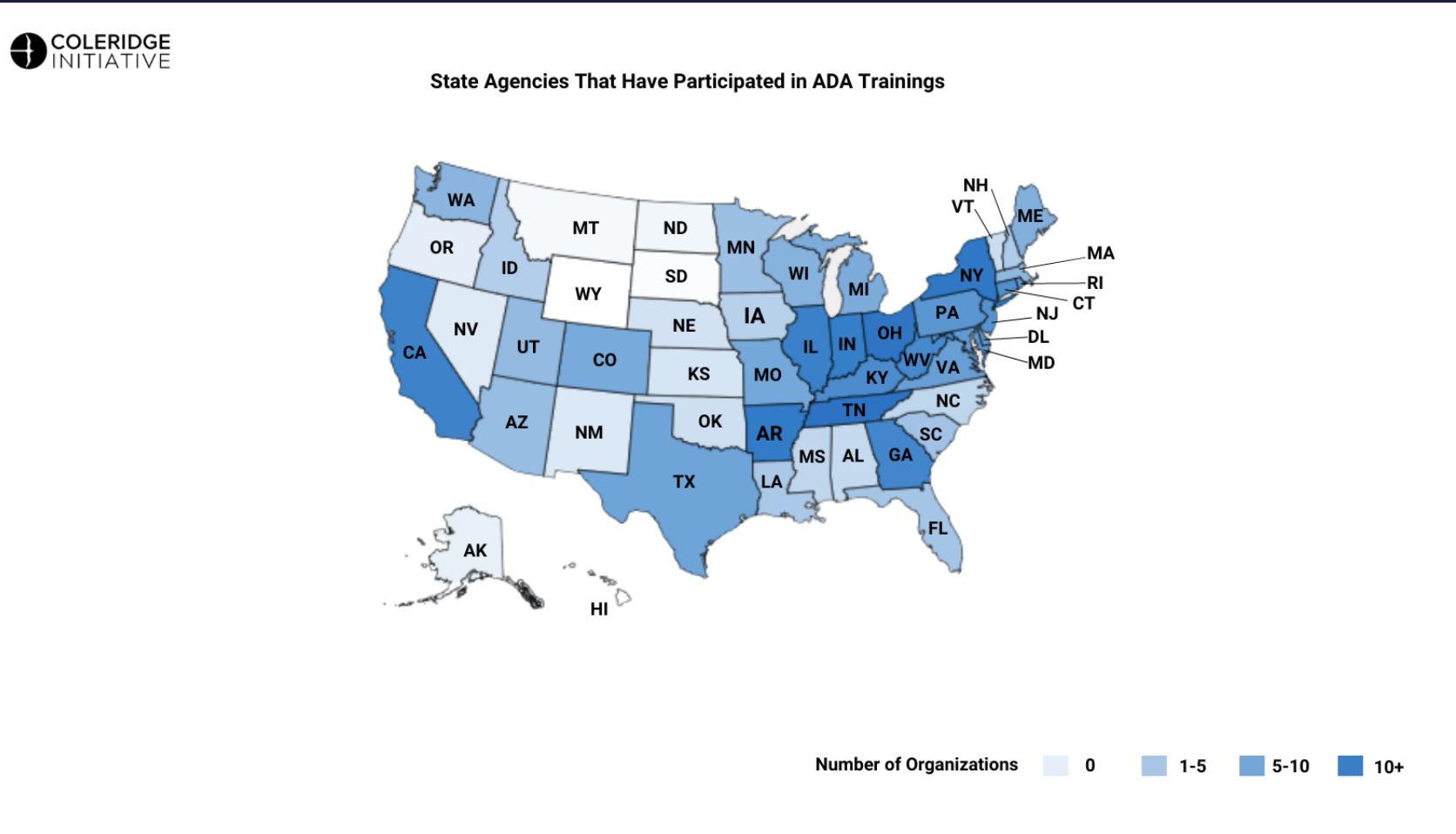
## Training Update

# Applied Data Analytics Training Programs

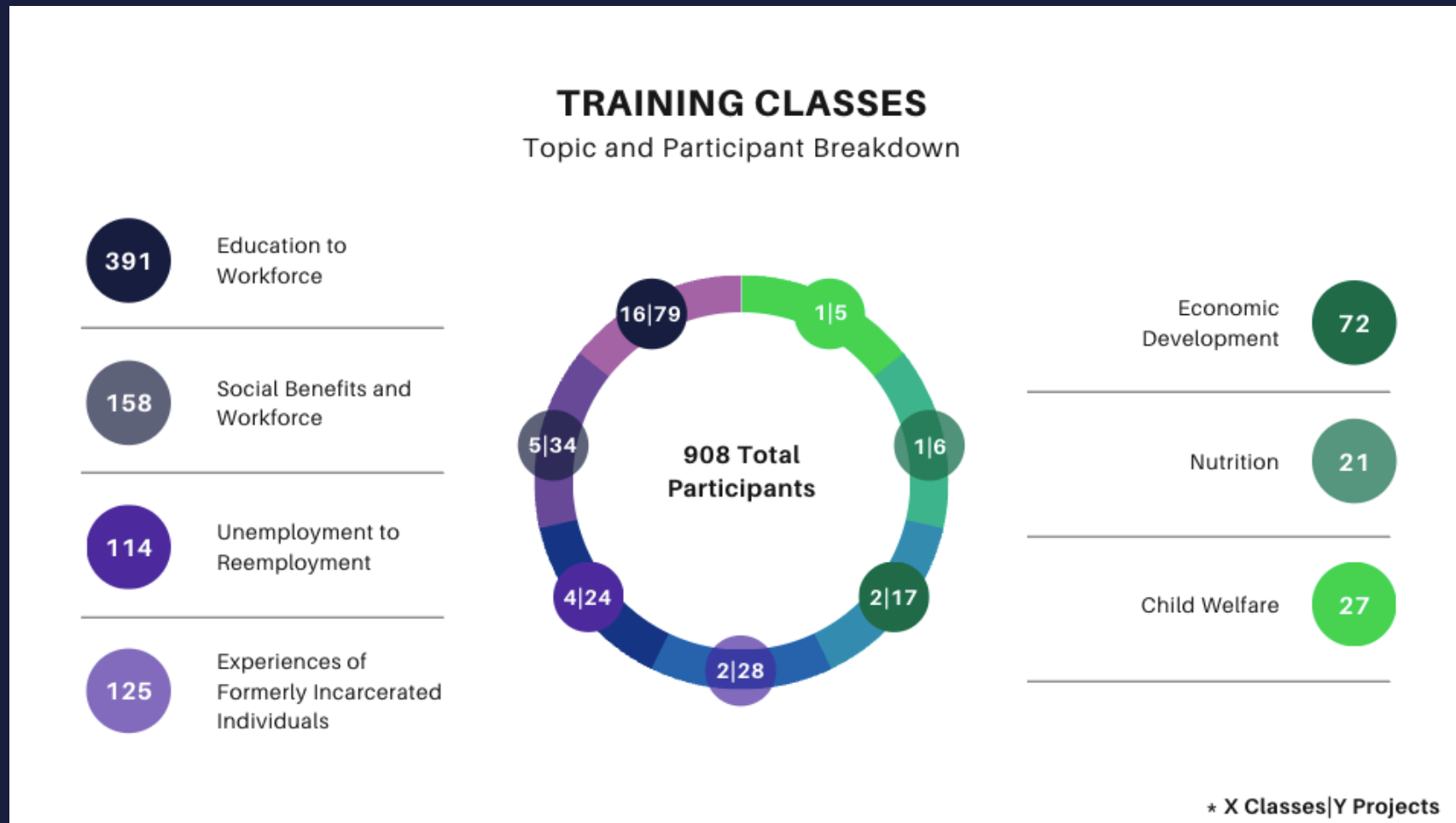
## Post-class survey:

- Response Rate: 25% (69/274) (2021-2022; 13 classes)
- Participants before the curriculum remodel mentioned time commitments as a barrier, not cited in post-remodel participant comments
- 2/3 of respondents shared training materials with colleagues, with most sharing final project presentations and/or reports
- Opportunity to better clarify expectations for non-coders and be more intentional about team make up
- Interest in short course (**planning on discussing this in the training breakout Tuesday**)

# States that have Participated in ADA Trainings



# Applied Data Analytics Training Programs





# Upcoming Training Topics

- Examining Unemployment to Reemployment Trajectories of Unemployment Insurance Claimants in Wisconsin
- Evaluating Welfare to Workforce Pathways in Arkansas
- Investigating Employment Outcomes of Foster Care Youth in California
- Examining Unemployment to Reemployment Trajectories of Unemployment Insurance Claimants in Arkansas

# 3rd Annual National Convening

## Tech Update

# Administrative Data Research Facility (ADRF)

- Secure cloud-based computing platform designed to promote collaboration, facilitate documentation, and provide information about data use to the agencies that own the data
- Established by the Census Bureau with funding from the Office of Management and Budget to inform the decision-making of the Commission on Evidence-Based Policy
- Provides secure access to over 400 confidential government datasets from 50 different agencies at all levels of government.
- Provides the opportunity to create data linkages across agencies and states to better understand programmatic and policy outcomes.

# ADRF – Five Safes Framework



Safe Projects



Safe People



Safe Settings



Safe Data



Safe Exports

## Appropriate Use of Data

- Only agency approved projects and data sets
- Only approved members can access the isolated project workspaces
- Controlled access to resources
- No shared environment between projects and resources

## Trained and Authorized Researchers

- Only approved researchers are permitted to access project workspaces
- User on-boarding process includes signing data use agreements, terms of use, security training module
- Data resources are explicitly granted based on project requirements
- Data resources are strictly in a read-only mode to ensure the integrity of the source data
- Security protocols follow strict FedRAMP guidelines

## Prevents Unauthorized Use

- Provides secure methods for agency micro-data transfer
- Only agency authorized personnel are invited to perform data transfers
- The transfer of data uses the FedRAMP Authorized, FIPS 140-2 validated, Kiteworks Secure Environment
- The transfer of data is restricted to upload operations only
- Additional security protocols include vulnerability scanning and third-party penetration testing

## Protect Data Confidentiality

- Data Hashing - A custom stand-alone application simplifies and facilitates the hashing of data prior to transmission to the ADRF
- Data Stewardship - a web-based portal for data stewards to manage and monitor project and associated resources including project configurations, user activity, user onboarding status, and overall cost of a project on the ADRF etc.

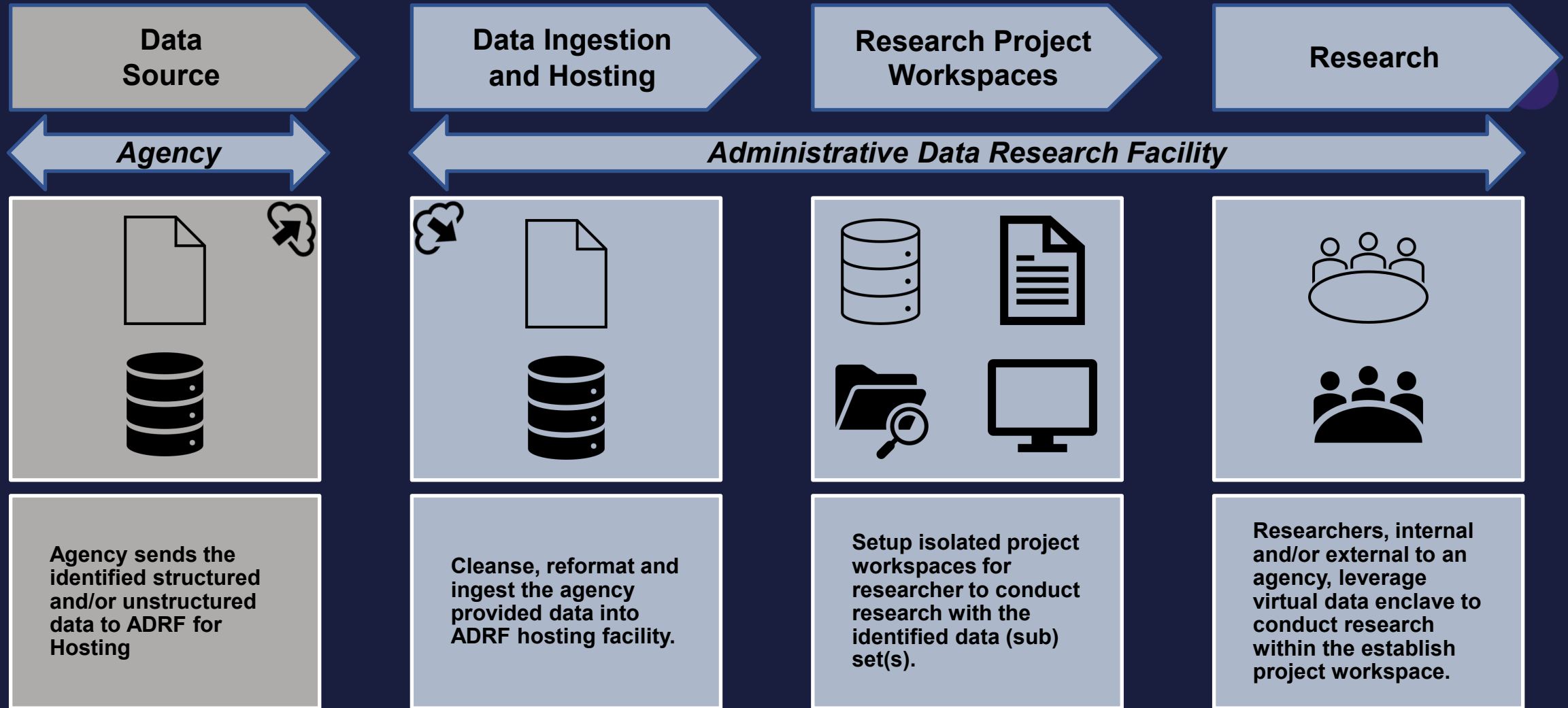
## Non-Disclosive Exports

- Prevents users from unauthorized removal of any information within the secure environment
- Export requests are reviewed by data stewards following agency guidelines (e.g. proper cell suppression, no complementary disclosures, rounding and noise applied, no references to disclosive specific observations)
- Maintain a log of export requests for auditing purposes and to evaluate subsequent requests for complementary disclosure

# ADRF Ecosystem – Key Components



# ADRF – Service Flow



# Upcoming Enhancements

- **Data Modernization**

The new big data warehouse solution, known as Amazon RedShift, uses massive parallel processing (MPP) and compression to decrease query execution time and performs operations on billions of rows at once.

- **ADRF Management Portal**

ADRF management portal will enable self-service provisioning for project and user on-boarding, track, monitor and report actual utilization for users, data and projects against provisioned entitlements.

- **Git based Source Code Repository**

The new Git based source code repository will allow project-based code repositories and better code version management capabilities.

- **Python and R Repositories**

The in-house repositories will enable ADRF users to self-install required packages without the need to open a service request.

- **Service Announcement Banner**

The ADRF announcement banner will proactively inform users about upcoming service maintenance windows , planned and unplanned service outages.



Yvette  
Choclaad  
*Managing  
Director*



Erin Joyce  
*Director,  
Programs*



Cynthia  
Forland  
*Director, State  
Engagement  
and Special  
Projects*



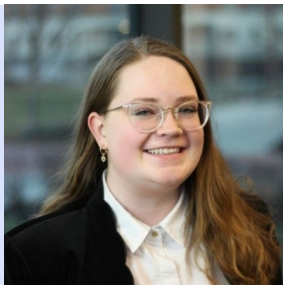
Jason Owen-  
Smith  
*Governance  
Advisor*



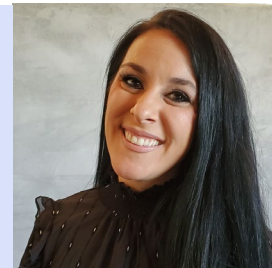
Elaine Brock  
*Legal Advisor*



Ceanna  
Burnheimer  
*Operations  
Coordinator*



Jessica  
Vendegnia  
*Project  
Manager*



The Administering  
Organization:  
*Supporting,  
Representing, and  
Advocating for the  
Network of Multistate  
Data Collaboratives*



# COORDINATING COLLABORATIVE WORKING SESSIONS

27

...since July 2022



# SUPPORTING GOVERNANCE IN THE MIDWEST COLLABORATIVE

- Memorandum of Understanding with Administering Organization and accompanying Bylaws
- Request for Information (RFI) process to bring in external researcher partners to support projects aligned with priority focus areas



# SUPPORTING GOVERNANCE IN THE MIDWEST COLLABORATIVE

Membership Tier Definitions	Definition
<b>Exploratory Member</b>	A Member Agency that chooses to participate voluntarily to explore the benefits of membership. Requires informal commitment from representatives to actively participate in collaborative meetings and other MWC events.
<b>Contributing Member, Data</b>	A Member Agency that has executed a Platform Agreement and informally commits to MWC governance principles and structure.
<b>Contributing Member, Governance</b>	A Member Agency that has executed the MOU but has not executed a Platform Agreement and thus is not yet able to allow data access to other members.
<b>Full Member</b>	A Member Agency that has executed both the MOU and Platform Agreement.



# IDENTIFYING PRIORITY AREAS OF FOCUS

## Midwest Collaborative (MWC)

- Equity in the Unemployment Insurance system
- Equity in the Higher Education system
- Education and credential attainment
- Child, Family, and Social Services
- Teacher workforce

## Southern Regional Data Collaborative (SRDC)

- Credentials of value
- Post-secondary non-completers
- Unemployment to Reemployment – measures of timeliness
- UI Claimants – access to training and education



# PLANNING FOR SUSTAINABILITY

- Document business lines and operational functions (at scale) and understand state agency capacity needs
- Develop cost estimates for the administering organization and states, at scale
- Support collaboratives re: funding for projects and products → successes and proof of concept
- Highlight successes and create the conditions to attract the kind of funding that would support a state-driven ecosystem at scale



# REPRESENTING THE COLLABORATIVES

- Presentations at NASWA and SHEEO conferences and meetings
- Briefings and updates for Congressional Committee staff
- Briefing to USDOL's Employment & Training Administration
- Presentation for Data Foundation webinar on the NSDS
- Comments to the Equitable Data Working Group (White House)
- Presentation for the Advisory Committee on Data for Evidence Building (Commerce)
- Presentation to the Workforce Information Advisory Committee (Labor)

Some important steps! → Bill text related to multi-state data collaboration (RAWA, Build Back Better)



# HELP ATTRACT FUNDING OPPORTUNITIES

USDOL ETA's Advanced Data Analytics Training Opportunity

*"Evaluating Welfare to Workforce Pathways"*

Accepted class participants will learn and apply data analytic approaches to linked Arkansas human services, WIOA, and UI wage data to better understand workforce behavior and outcomes



# Pathways to Data Product Innovation



*Facilitator*

**Cynthia Forland**  
*Forland Wheeler  
Consulting*

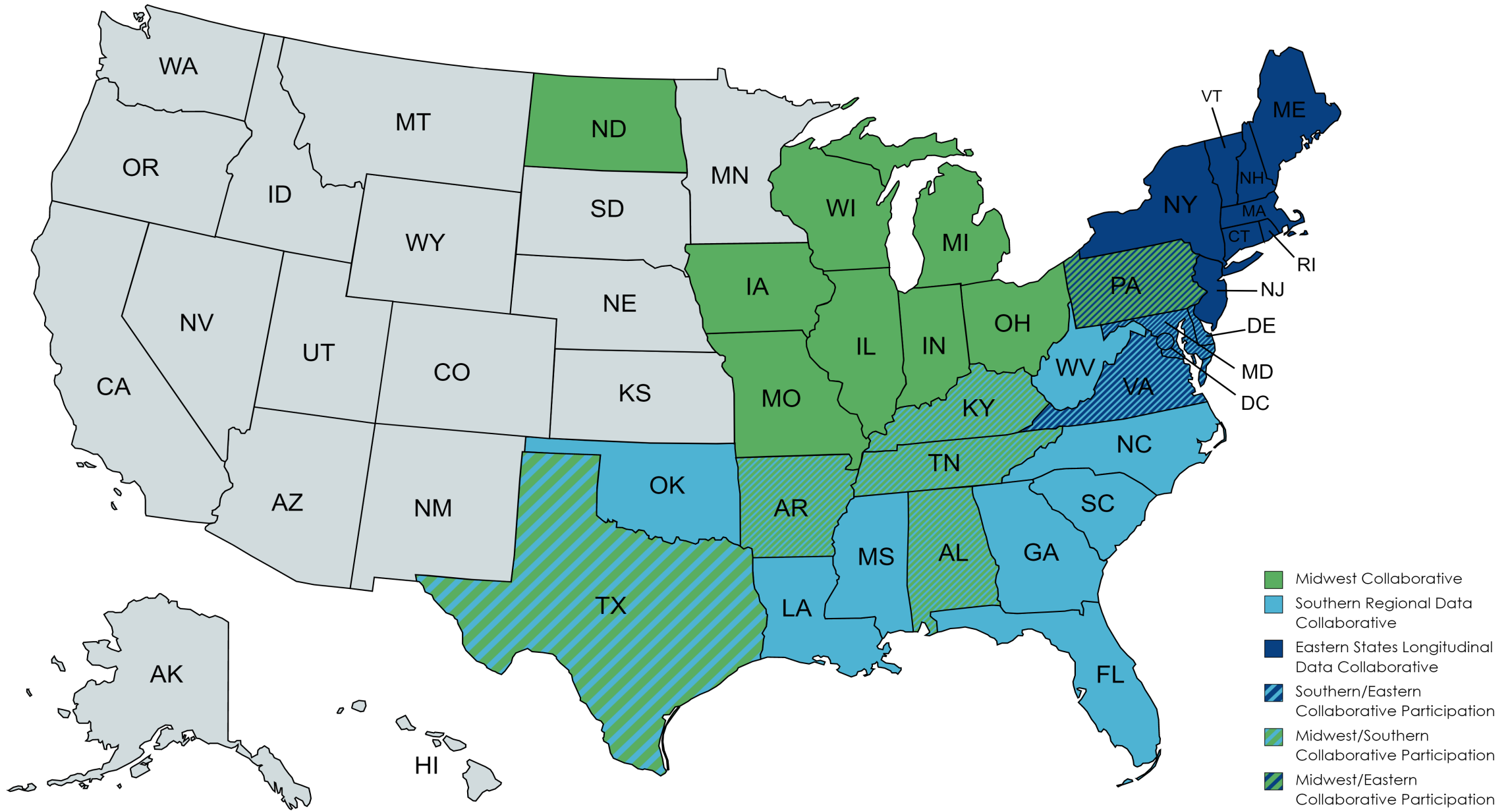


**George Putnam**  
*Illinois Department  
of Employment  
Security*



**Adam Leonard**  
*Texas Workforce  
Commission*





# SOUTHERN REGIONAL DATA COLLABORATIVE: HARNESSING THE POWER OF THE NETWORK

- Key Feature of the MSDCs is that there is no “One Way” to Participate
  - Some states are ready to share data
  - Other states are interested in learning from one another
  - Others are interested in collaborating to solve common problems
- SRDC has been focused on Working together on Common Problems through 3 Working Groups
  - Measures of Claimant Reemployment Success
  - Credentials of Value
  - Post-Secondary NonCompleters



# PROGRESS OF THE WORKGROUPS

- Measures of Claimant Reemployment Success
  - Texas has 20 years of experience with Claimant Reemployment Measures
    - Measures for Accountability, for Story Telling, for Changing Behavior, for Impact
  - Focus was on sharing experience & materials
- Credentials of Value
  - No obvious consensus about how to define, catalog CoV
  - Brought in outside researcher to highlight various promising approaches
  - Working to develop priorities & questions that CoV efforts need to address
- Post-Secondary Non-Completers
  - Many states have efforts underway & sharing approaches
  - Some looking at KYStats system as a tool to assist
  - Key insight: Covid created a new, non-standard population



# Call to Action!



**Adam Leonard**  
*Texas Workforce  
Commission*



**Julia Lane**  
*NYU, formerly  
Coleridge Initiative*



✓ **WHERE ARE WE GOING**

✓ **WHAT DO WE NEED TO GET THERE?**

✓ **HOW BADLY DO YOU WANT IT?**

# INDIVIDUAL COLLABORATIVE MEETINGS

Midwest | Franklin Park

South | Farragut Square

\*Reconvene at 4:30 PM\*

East | McPherson Square



*RESULTS FROM INDIVIDUAL  
COLLABORATIVE MEETINGS  
ALIGNING GOALS AND ACTION  
ITEMS*

*THANK YOU!*