



march 12-14, 2024
pittsburgh, pa

rivers of knowledge

WORKSHOP CALENDAR

KEY

▲▼△ Beginner

▲▼△ Intermediate

▲▼▲ Advanced

TUESDAY, MARCH 12 - PRE-CON



2:15 - 3:30p

Get Anchored
in IPC and FPC
Basics!

Allegheny



3:45 - 5:00p

ICON Basics
& System
Overview

Allegheny

WEDNESDAY, MARCH 13 - WORKSHOP SESSIONS



2:45 - 3:45p

A River Runs
Through IB6

Oakmont



2:45 - 3:45p

Ebb and Flow
of IB4s & IB5s

Monongahela



2:45 - 3:45p

ICON Basics
& System
Overview

Allegheny

Shared Session

2:45 - 3:45p

When Tributaries
Unite: SIDES-ICON
Connections
during
Modernization

Grand Ballroom

THURSDAY, MARCH 14 - WORKSHOP SESSIONS



8:30 - 9:30a

Riverscape
Riddles:
Jeopardy
Edition

Allegheny



8:30 - 9:30a

A River Runs
Through IB6
repeat

Oakmont



8:30 - 9:30a

Fishing for
Wages in the
Rivers of IB14

Monongahela



8:30 - 9:30a

Wading in
the Water-
Catching on
with IB8606

Urban Ballroom

**Check
in at the
HOSPITALITY DESK
to receive your
NAME BADGE!**

All attendees will
be *required*
to have a
name badge
to attend
sessions &
meals.



qrco.de/2024UIIBSpeakers



**Scan here or visit
the url to view the
Speaker Bio Page!**

MONDAY, MARCH 11

5:00 - 7:00p

Grand Ballroom Foyer 17th Level

Hospitality Desk

Pick up your name badges to attend all sessions.

3

National UI IB and Federal Programs Training | @NASWAorg | #NASWAUIIB24

TUESDAY, MARCH 12

10:00a - **Hospitality Desk**

6:30p Pick up your name badges to attend all sessions.

Grand Ballroom Foyer 17th Level

2:15 -
3:30p

**IB and Federal Programs Training
Workshop**

Allegheny 17th Level



Get Anchored in IPC and FPC Basics!

This workshop will provide an overview of the Interstate Benefits (IB) Program including the Combined Wage (CWC) Program, Federal Claim Program (UCFE), and Military Claim Program (UCX). It will describe the roles and responsibilities of the Interstate and Federal program coordinators and identify various resources available.

PANELISTS

- Razanne Chatila** (AZ)
- Cheryl Newton** (MI)
- Tanya Thurman** (OH)
- Jennifer Wise** (KS)

3:30 -
3:45p

Beverage and Networking Break

17th Level Corridor

3:45 -
5:00p

**IB and Federal Programs Training
Workshop**

Allegheny 17th Level



ICON Basics & System Overview

Overview of the history of ICON and its various exchanges.

PANELISTS

- Judy Mattinson** (NASWA)
- Jann LeVitre** (UIPS)
- Martha Stephens** (Conduent)

5:00-
6:30p

Welcome Reception

Sky Room & 17th Level Corridor

KEY

▲▼△ **Beginner**

▲▼△ **Intermediate**

▲▼▲ **Advanced**

WEDNESDAY, MARCH 13

7:30a -
5:00p

Hospitality Desk

Pick up your name badges to attend all sessions.

Grand Ballroom Foyer (17th Level)

7:30 -
8:30a

Breakfast

Urban Ballroom 17th Level

8:30a

Opening Plenary Session

with SIDES Seminar Attendees

Grand Ballroom 17th Level

(Shared Session)

Welcome

Michael Burke, Director, Unemployment Compensation Bureau, New Hampshire Employment Security

Kris Funk, Unemployment Insurance Administrator, Wyoming Department of Workforce Services

Pennsylvania Welcome

Nancy Walker, Secretary, Pennsylvania Department of Labor & Industry

NASWA Welcome

Scott B. Sanders, President & CEO, NASWA

USDOL Update

Michelle Beebe, Deputy Administrator, Office of Unemployment Insurance, USDOL

Keynote Speaker

sponsored by

Scotty Gunther "The Co-Worker Challenge"

FAST
ENTERPRISES

10:15a

Networking Break

Sky Room & 17th Level Corridor

10:45a

IB Plenary Session

Urban Ballroom 17th Level

Welcome

Kris Funk (WY)

KEY

▲▽△ Beginner

▲▼△ Intermediate

▲▼▲ Advanced

National UI IB and Federal Programs Training | #NASWAUIIB24

WEDNESDAY, MARCH 13

10:45a **IB Plenary Session (cont.)**

Urban Ballroom 17th Level

ICON Update & NASWA Resource Demonstration

Update on ICON modernization and demonstration of ICON website tools and training opportunities.

PANELISTS **Judy Mattinson** (NASWA)
Leah Reeder (NASWA)

Docking the Federal & FCCC Boat

This session will provide an overview of Unemployment Compensation for Federal Employees (UCFE), examine the functions of the Federal Claims Control Center (FCCC), and offer a federal employer perspective from a representative of Equifax.

MODERATOR **Latonia Osborne** (AL)
PANELISTS **Karen Cole** (MO)
Aisha Fryson (FL)
Kim Tscharnier (Equifax)

12:00p **Luncheon**

Urban Ballroom 17th Level

1:15p **Plenary Session**

Grand Ballroom 17th Level

NASWA Update

Scott B. Sanders, President & CEO, NASWA

IB/SIDES Awards Ceremony

2:30p **Networking Break**

Sky Room & 17th Level Corridor

2:45p **Concurrent UI IB Workshop Sessions**



A River Runs Through IB6

Oakmont 1st Floor

This session will cover an overview of the IB6, including Incoming and Outgoing IB6 bills, and resolving discrepancies.

MODERATOR **Kris Funk** (WY)
PANELISTS **Amy Houck** (WY)
Megan Laferriere (ME)

KEY

▲▽▲ Beginner

▲▼▲ Intermediate

▲▼▲ Advanced

National UI IB and Federal Programs Training | #NASWAUIIB24

WEDNESDAY, MARCH 13

2:45p

Concurrent UI IB Workshop Sessions (cont.)



Ebb and Flow of IB4s & IB5s

Monongahela 17th Level

Learn the ebbs and flows of the wage transfer waters. Delve into the specifics of the IB4 – Request for Wage Transfer and the IB5 - Determination of Combined Wage Claim. Gain insights to handle wage transfers efficiently and learn how to make accurate determinations for combined wage claims. Learn how to assign and transfer Federal Wages and discover resources offered to stay informed and ensure you are navigating the wage transfer waters correctly.

PANELISTS **Melissa Schmolke** (MT)
Jennifer Wise (KS)



ICON Basics & System Overview

Allegheny 17th Level

Overview of the history of ICON and its various exchanges

PANELISTS **Judy Mattinson** (NASWA)
Jann LeVitre (UIPS)
Martha Stephens (Conduent)

When Tributaries Unite: SIDES & ICON Connections during Modernization

Grand Ballroom 17th Level
(Shared Session)

MODERATOR **Ben Peirce** (NASWA)
PANELISTS **Jorie Cummis** (NSNES)
Blake Dunham (NASWA)
Brett Flachsbarth (NASWA)
Jerry Pectol (NASWA)
Richard Siegel (UTMCorp)

3:45p

Networking Break

Sky Room & 17th Level Corridor

4:00p

Regional Roundup

Regions 1 - 5

Urban Ballroom 17th Level

Regions 6 - 10

Grand Ballroom 17th Level

5:00p

Adjourn Day 1

KEY

▲▼▲ Beginner

▲▼▲ Intermediate

▲▼▲ Advanced

National UI IB and Federal Programs Training | #NASWAUIIB24

THURSDAY, MARCH 14

7:30a -
12:00p

Hospitality Desk

Pick up your name badges to attend all sessions.

7:30 -
8:30a

Breakfast

Urban Ballroom 17th Level

8:30a

Concurrent UI IB Workshop Sessions



Riverscape Riddles: Jeopardy Edition

Allegheny 17th Level

Prepare to embark on an exciting journey through UI IB & Federal programs rivers with our Riverscape Riddle Jeopardy Edition workshop! Challenge your knowledge in this interactive and engaging session. Join us for an unforgettable experience that combines fun, learning, and friendly competition.

MODERATORS **El'Lise Bethel** (FL)
Jennifer Wise (KS)



A River Runs Through IB6 - REPEAT

Oakmont 1st Floor

This session will cover an overview of the IB6, including Incoming and Outgoing IB6 bills, and resolving discrepancies.

MODERATOR **Kris Funk** (WY)
PANELISTS **Amy Houck** (WY)
Megan Laferriere (ME)



Fishing for Wages in the Rivers of IB14

Monongahela (17th Level)

This session will cover the purpose of the electronic IB14, how to access the IB-14 website, as well as how to use the website to send and receive electronic IB-14 requests and responses.

MODERATOR **Nellie Spangler** (NASWA)
PANELISTS **Cicely 'CeCe' Bennette** (AL)
Donald 'Vic' Stephens (TN)



Wading in the Water- Catching on with IB8606

Urban Ballroom (17th Level)

This workshop is designed to equip you with best practices aimed at enhancing your state's overpayment recovery processes. Highlights include a comprehensive overview of the Interstate Reciprocal Overpayment Recovery Arrangement; best practices and strategies that can be implemented to optimize your states overpayment recovery;

KEY

▲▼△ Beginner

▲▼△ Intermediate

▲▼▲ Advanced

THURSDAY, MARCH 14

8:30a **Concurrent UI IB Workshop Sessions (cont.)**

▲▼△ **Wading in the Water- Catching on with IB8606 (cont.)**

deep dive exploration of the IB8606 Website including the ins and outs of sending and receiving requests and responses and leveraging the Interstate Overpayment Report.

MODERATOR Julie Squire (NASWA)

PANELISTS Annette Gordils (IL)

Brad Trummer (WI)

9:30a **Networking Break**

Sky Room & 17th Level Corridor

10:00a **IB Closing Plenary**

Urban Ballroom 17th Level

Best Practices for Navigating the IB Waters

Dive into the unemployment insurance best practices waters to optimize your state's performance. This is an interactive session with discussion and collaboration among states to share innovative and efficient systems for staff onboarding, process automation, Unemployment Compensation for Federal Employees (UCFE) processing, identity theft challenges, and modernization successes among states.

MODERATORS Odeva Chamberliss (OK)

Karen Cole (MO)

Annette Gordils (IL)

Megan Laferriere (ME)

Donald 'Vic' Stephens (TN)

PANELISTS

Razanne Chatila (AZ)

Casey Hofland (ID)

UCX Focus: State, Federal, and Military

MODERATORS LaTonia Osborne (AL)

Jennifer Wise (KS)

PANELISTS

Candace Edens (USDOL)

James Panek (Army)

Kevin Smith (Marines)

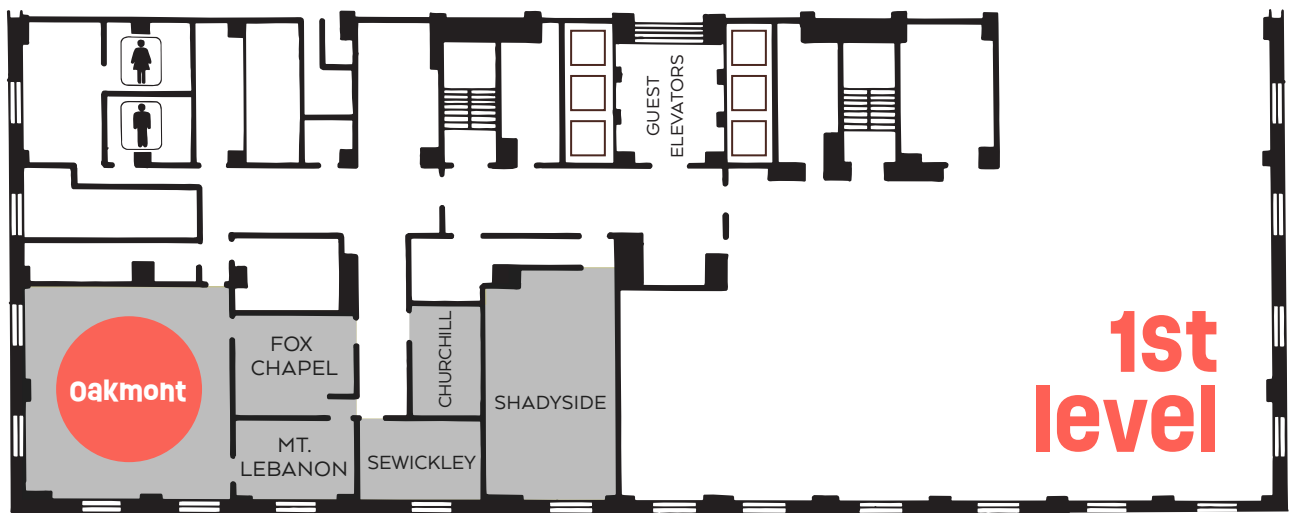
Closing Remarks

12:00p **Conference Adjourned**

KEY ▲▼△ **Beginner** ▲▼△ **Intermediate** ▲▼▲ **Advanced**

National UI IB and Federal Programs Training | #NASWAUIIB24

17th level



1st level