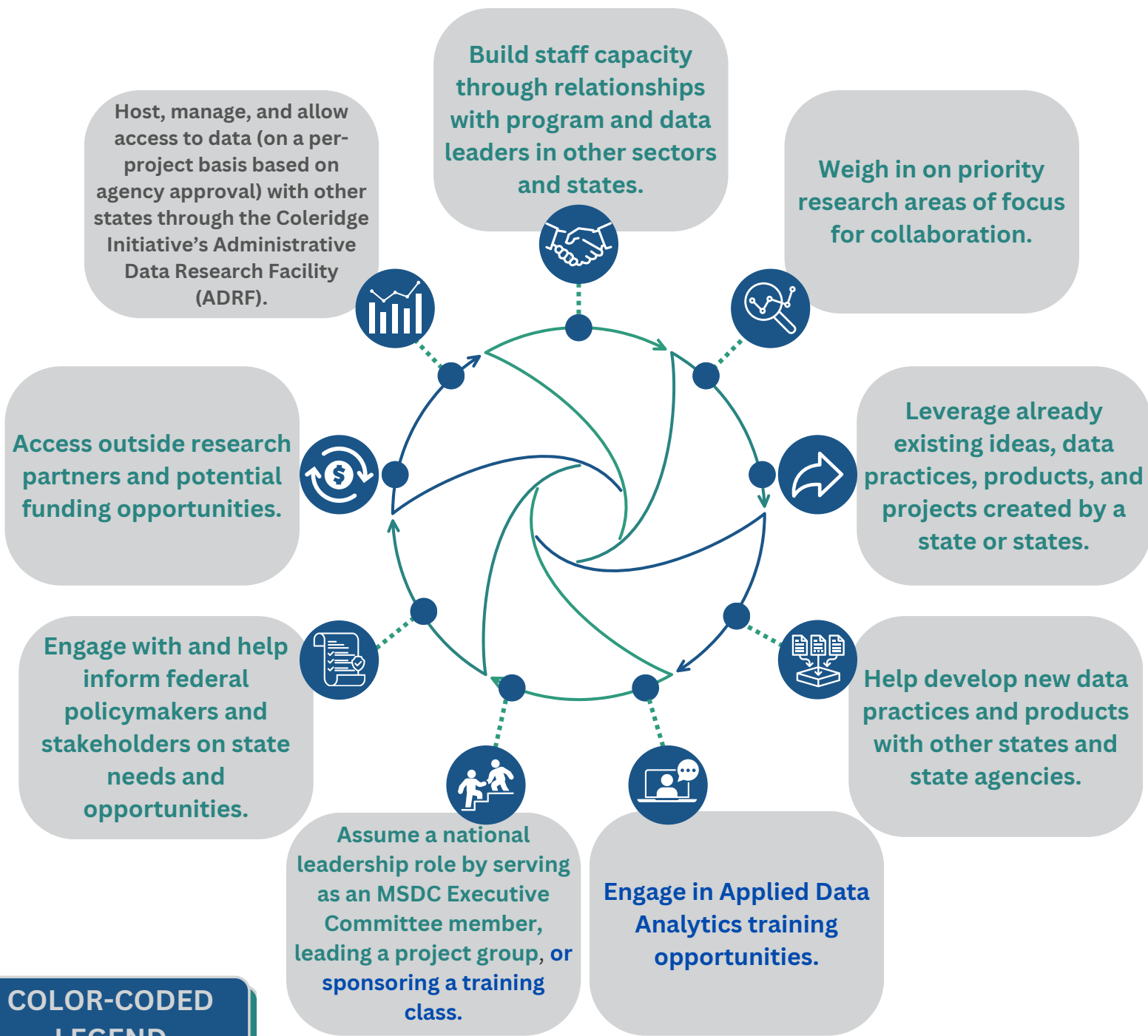


WAYS TO ENGAGE IN THE MULTI-STATE DATA COLLABORATIVE



COLOR-CODED LEGEND

- ✓ Share your interest in joining a topical or regional collaborative meeting by emailing the MSDC team at NASWA at datacollabs@naswa.org.
- ✓ Learn about upcoming training opportunities in the training section of the Coleridge Initiative website and reach out to the training team at training@coleridgeinitiative.org.
- ✓ Learn about the secure data platform in the [ADRF](#) section of the Coleridge Initiative website and reach out to the ADRF support team at support@coleridgeinitiative.org.

Want to get involved, but not sure how? We are here to help! Email us at datacollabs@naswa.org.

Why Should a State Agency Join the Multi-State Data Collaborative?

Talking Points on the MSDC

Across the country, state workforce, higher education, human services, and other agencies are responding to the needs and desire of policymakers and practitioners to leverage timely administrative data to better respond to labor market needs, improve programs and services, and address demographic and geographic disparities.

The Multi-State Data Collaborative (MSDC) brings together state agency program, policy, and data experts across multiple sectors to innovate in using agency administrative data to improve the lives of individuals, families, and communities.

As members of the MSDC, state agencies can:

- ✔ Network to share ideas and existing state practices and products,
- ✔ Work together to develop projects that lead to shared data products,
- ✔ Join cross-regional project groups to explore a shared priority area of focus or technical challenge,
- ✔ Expand capacity through research partnerships with policy centers at universities and nonprofits,
- ✔ Participate in an Applied Data Analytics course that provides training in core data analytics techniques by working on specific projects using real-world micro-data.
- ✔ Safely share data among states to better understand local labor markets that cross state lines and develop a full picture of the flows of workers and learners irrespective of state boundaries,
- ✔ Engage with and help inform federal policymakers and stakeholders on state needs and opportunities, and
- ✔ Benefit from the support provided by the National Association of State Workforce Agencies (NASWA) as the MSDC administering organization and the Coleridge Initiative as the MSDC platform organization.

Want to stay up to date on the MSDC? Check out our website!

