



WORKFORCE INFORMATION



UINTERACT

Missouri's online UI application, UInteract, moved to an Angular platform. The platform provides a structured development system that allows for more efficient performance, flexibility and scalability. These changes create a more secure and stable application, protect sensitive data and provide greater overall protection.



RE-ENTRY JOB CENTERS

The Department of Higher Education and Workforce Development has continued its partnership with Department of Corrections to expand Re-Entry Job Centers behind the walls in eighteen facilities statewide. Justice involved individuals have access to all available one-stop services while incarcerated and link to employment and training services prior to release.



CAREER OPPORTUNITY TRAINING FOR YOUTH (C.O.T.Y.)

The COTY program is a federally funded initiative through the Missouri Department of Higher Education and Workforce Development, designed to support students in high school. This initiative provides work experience opportunities that equip students with the skills and training for their future careers.

Online Resources: jobs.mo.gov | dhewd.mo.gov | labor.mo.gov

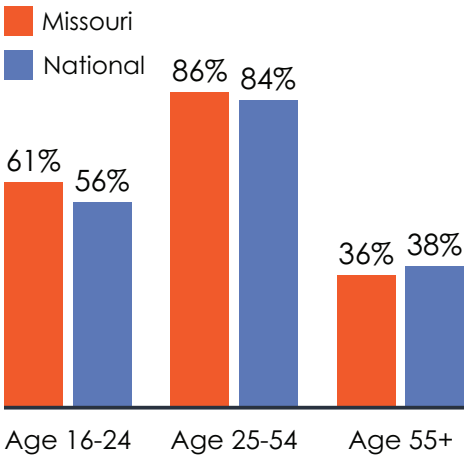
LABOR MARKET INFORMATION

(Age 16 & older)

	Missouri	National
Employment (April 2024-April 2025 change)	+0.0%	+1.1%
Unemployment Rate, 2024 annual average	3.7%	4.0%
Labor Force, 2024 annual average	3,131,000	
Unemployed Persons per Job Opening, 2024 annual average	0.7	0.9
Average Hourly Earnings (May 2024-April 2025)	\$32.04	\$35.54
Average Hourly Earnings (April 2024-April 2025 change)	+4.2%	+3.9%

Source: USDOL-BLS, LAUS and CES, using preliminary April data

ANNUAL LABOR FORCE PARTICIPATION RATE



Source: USDOL-BLS, CPS (2024 Annual Average)

MISSOURI DEPARTMENT OF LABOR AND INDUSTRIAL RELATIONS

Programs within Agency

- UI
- W&H
- Workers' Compensation

MISSOURI DEPARTMENT OF HIGHER EDUCATION AND WORKFORCE DEVELOPMENT

Programs within Agency

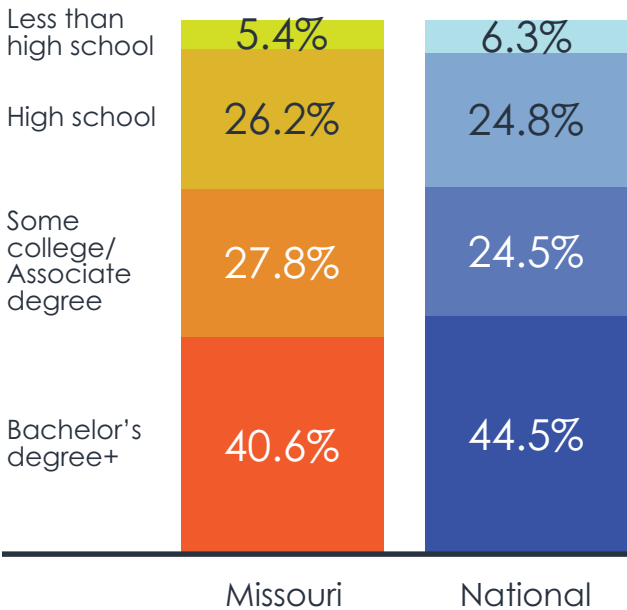
- TAA
- VETS
- WP
- WOTC
- WIOA – A, DW, & Y

WIOA Core Programs: Administering Agencies

- Missouri Department of Higher Education and Workforce Development – WIOA Title I, WP
- Missouri Department of Elementary and Secondary Education – AE, VR

EDUCATIONAL ATTAINMENT

(Age 25 & older)



Source: USDOL-BLS, CPS (2024 Annual Average, using preliminary April data)

NUMBER OF LOCAL WORKFORCE AREAS

AMERICAN JOB CENTERS

Source: 2024 WIOA State Plan.
CareerOneStop American Job Center Finder



PARTICIPANTS SERVED BY MISSOURI'S WORKFORCE SERVICES

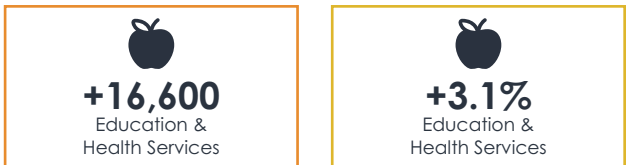


Source: USDOL-ETA, PY23 Performance Data (dol.gov/agencies/eta/performance/results)

KEY INDUSTRIES

MOST JOBS ADDED

FASTEST GROWING



Source: BLS, Current Employment Statistics (April 2024 - April 2025)

UNEMPLOYMENT DATA

Average Duration

The average number of weeks people receive unemployment insurance.

Exhaustion Rate

The percentage of individuals receiving unemployment benefits who use all the eligible weeks without finding new employment.

Source: USDOL-ETA Quarter 4 – 2024

12.7 weeks
Missouri
15.3 weeks
National

