

## WORKFORCE INFORMATION



### VETERINARIAN GRANT PROGRAMS

\$150,000 grants are available to new veterinarians who work in eligible rural clinics and stay in the state for eight years. The Elite 11 Veterinary Program through the University of Nebraska-Lincoln provides scholarships for eligible students studying veterinary medicine. Both grant programs aim to increase the number of production animal veterinarians in Nebraska.



### JAG-JOBS FOR AMERICA'S GRADUATES

JAG-Jobs for America's Graduates expanded to include 25 new school districts in the 2024-2025 school year. An outdoor classroom at Umo'ho Nation Public Schools includes a garden that feeds the community and teaches youth workers about the health benefits of fresh food, sustainable gardening, and cultural practices.



### UNEMPLOYMENT INSURANCE INNOVATIONS

Nebraska drastically increased its benefit payment timeliness after implementing new efficiencies, staff-led process changes, and a partnership with Epiphany Associates.

Online Resources: [Neworks.nebraska.gov](https://neworks.nebraska.gov) | [dol.nebraska.gov](https://dol.nebraska.gov)

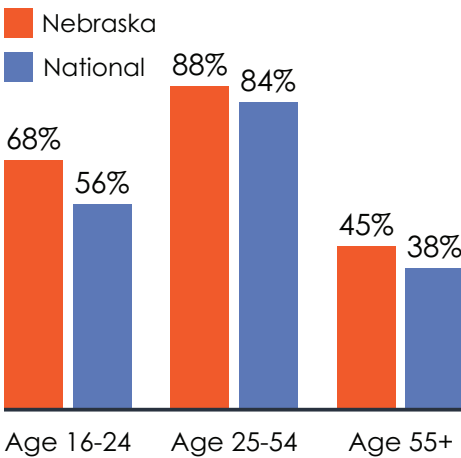
## LABOR MARKET INFORMATION

(Age 16 & older)

	Nebraska	National
Employment (April 2024-April 2025 change)	<b>+0.6%</b>	<b>+1.1%</b>
Unemployment Rate, 2024 annual average	<b>2.8%</b>	<b>4.0%</b>
Labor Force, 2024 annual average	<b>1,069,000</b>	
Unemployed Persons per Job Opening, 2024 annual average	<b>0.5</b>	<b>0.9</b>
Average Hourly Earnings (May 2024-April 2025)	<b>\$31.89</b>	<b>\$35.54</b>
Average Hourly Earnings (April 2024-April 2025 change)	<b>+3.4%</b>	<b>+3.9%</b>

Source: USDOL-BLS, LAUS and CES, using preliminary April data

### ANNUAL LABOR FORCE PARTICIPATION RATE



Source: USDOL-BLS, CPS (2024 Annual Average)

### NEBRASKA DEPARTMENT OF LABOR

#### Programs within Agency

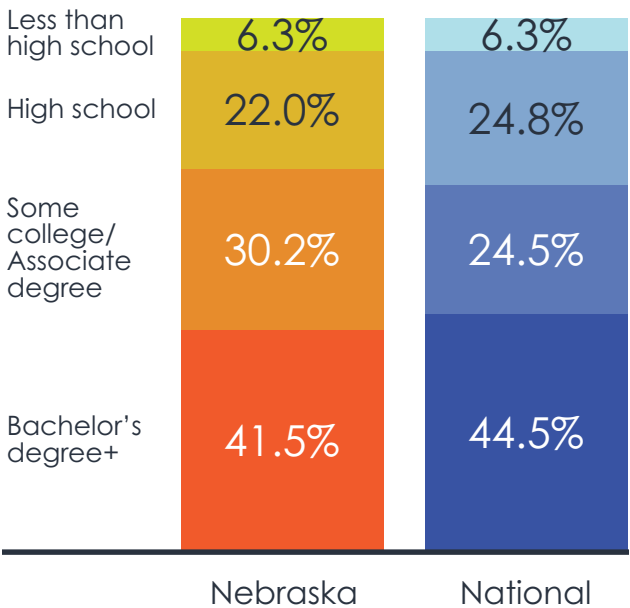
- Child Labor
- Contractor Registration
- Employee Classification
- Farm Labor Contractors
- JVSG
- LMI
- Meatpacking Bill of Rights
- MSFW
- Non-English Speaking Workers Protection
- On-Site Safety & Health Consultation
- Paid Sick Time
- PEO Registration
- Rapid Response and Layoff Aversion Services
- RESEA
- SCSEP
- Short-Time Compensation
- SNAP Next Step (Jointly with Nebraska DHHS)
- UI
- USDOL Registered Apprenticeships
- Veterans Preference
- W&H
- Wage Payment and Collection
- WP
- WOTC
- WIOA – A, DW, & Y

#### WIOA Core Programs: Administering Agencies

- Nebraska Department of Labor – WIOA Title I, WP
- Nebraska Department of Education – AE
- Nebraska Department of Education & Nebraska Commission for the Blind and Visually Impaired – VR

### EDUCATIONAL ATTAINMENT

(Age 25 & older)



Source: USDOL-BLS, CPS (2024 Annual Average, using preliminary April data)

### NUMBER OF LOCAL WORKFORCE AREAS

#### AMERICAN JOB CENTERS

Source: 2024 WIOA State Plan, CareerOneStop American Job Center Finder



### PARTICIPANTS SERVED BY NEBRASKA'S WORKFORCE SERVICES

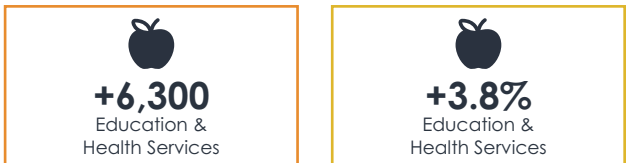


Source: USDOL-ETA, PY23 Performance Data ([dol.gov/agencies/eta/performance/results](https://dol.gov/agencies/eta/performance/results))

### KEY INDUSTRIES

MOST JOBS ADDED

FASTEST GROWING



Source: BLS, Current Employment Statistics (April 2024 - April 2025)

### UNEMPLOYMENT DATA

#### Average Duration

The average number of weeks people receive unemployment insurance.

#### Exhaustion Rate

The percentage of individuals receiving unemployment benefits who use all the eligible weeks without finding new employment.

Source: USDOL-ETA Quarter 4 – 2024

**12.1 weeks**  
Nebraska  
**15.3 weeks**  
National

