

WORKFORCE INFORMATION



EMPLOYMENT SECURITY DIVISION'S INTEGRATION WITH ADULT EDUCATION FOR ENHANCED MEASURABLE SKILLS GAINS AND CREDENTIAL REPORTING

Nevada's Employment Security Division partners with Adult Education to integrate demographic and skills data, streamlining measurable skills gains and credential reporting. Through common WIOA enrollment and data analytics, this initiative enhances service delivery, improves assessment accuracy, and empowers adult learners for career growth and economic resilience.



LEADERVERSE

In partnership with UNLV, Nevada's ESD funds the Leaderverse program to build leadership and career readiness among students. Through workshops, mentorship, and hands-on experiences, students gain skills in communication, management, problem-solving, and networking. This initiative broadens access to essential career development resources and supports future workforce success.



UNIVERSITY OF NEVADA, LAS VEGAS NURSE CAMP

To address Nevada's healthcare worker shortage, OWINN and UNLV's School of Nursing expanded the 2025 Nurse Camp for high school students. The camp offers hands-on exposure to nursing, academic and clinical activities, and certifications like CPR and Stop the Bleed, helping students explore and prepare for healthcare careers.

Online Resources: detr.nv.gov/

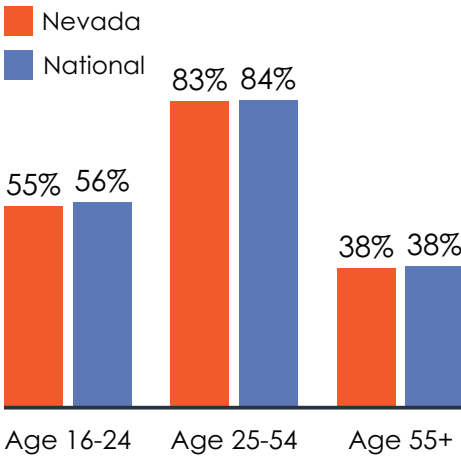
LABOR MARKET INFORMATION

(Age 16 & older)

	Nevada	National
Employment (April 2024-April 2025 change)	+0.7%	+1.1%
Unemployment Rate, 2024 annual average	5.6%	4.0%
Labor Force, 2024 annual average	1,648,000	
Unemployed Persons per Job Opening, 2024 annual average	1.1	0.9
Average Hourly Earnings (May 2024-April 2025)	\$30.98	\$35.54
Average Hourly Earnings (April 2024-April 2025 change)	+7.1%	+3.9%

Source: USDOL-BLS, LAUS and CES, using preliminary April data

ANNUAL LABOR FORCE PARTICIPATION RATE



Source: USDOL-BLS, CPS (2024 Annual Average)

NEVADA DEPARTMENT OF EMPLOYMENT, TRAINING AND REHABILITATION

Programs within Agency

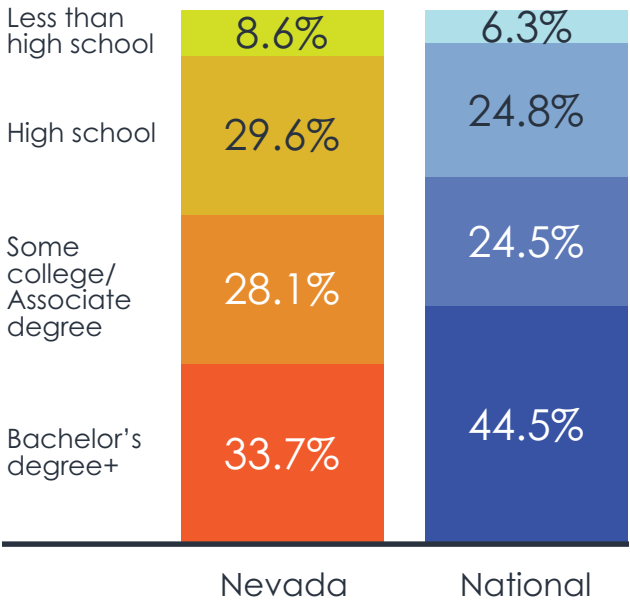
- FLC
- JVSG
- LMI
- Rapid Response
- RESEA
- TAA
- UI
- WOTC
- WIOA
 - Title I: A, DW, & Y
 - Title III: WP
 - Title IV: VR

WIOA Core Programs: Administering Agencies

- Nevada Department of Employment, Training and Rehabilitation – WIOA Title I, WP, VR
- Nevada Department of Education – AE

EDUCATIONAL ATTAINMENT

(Age 25 & older)



Source: USDOL-BLS, CPS (2024 Annual Average, using preliminary April data)

NUMBER OF LOCAL WORKFORCE AREAS

AMERICAN JOB CENTERS

Source: 2024 WIOA State Plan, CareerOneStop American Job Center Finder



PARTICIPANTS SERVED BY NEVADA'S WORKFORCE SERVICES

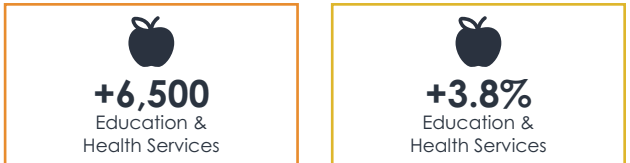


Source: USDOL-ETA, PY23 Performance Data (dol.gov/agencies/eta/performance/results)

KEY INDUSTRIES

MOST JOBS ADDED

FASTEST GROWING



Source: BLS, Current Employment Statistics (April 2024 - April 2025)

UNEMPLOYMENT DATA

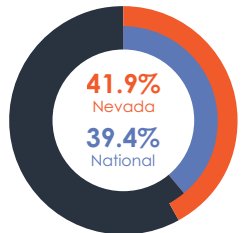
Average Duration

The average number of weeks people receive unemployment insurance.

16.6 weeks
Nevada
15.3 weeks
National

Exhaustion Rate

The percentage of individuals receiving unemployment benefits who use all the eligible weeks without finding new employment.



Source: USDOL-ETA Quarter 4 – 2024